

SS&C | EZE  
Eze Eclipse

# 2023 Q1

## New Feature Highlights



---

## On our way.

Bags are packed and the tank is full: you're set to get behind the wheel for another year of adventure in the markets. Good thing you're equipped with the incredible tools on offer from Eze Eclipse — and you're able to take advantage of new features when they're ready.

What have we packed for you for this leg of the drive? **Fixed Income** gets a lot of attention to both keep your data fresh, and make it easier to load new data. Don't lose time trying to find security information, instead use the new **Search** functionality to quickly find what you're looking for.

## Let's get into gear and hit the road!

# Locked On.

Keeping our features right on target.

When so much is happening it's easy to get distracted: is this when we zig when other zag? Do we keep looking for one extra bit of information to make a decision? Should we be chasing something else? Our teams keep focused on building the best features for you to be able to get the data you need, and to make the focused decisions that your success depends upon. When your tools are just as laser focused as you are, the only way is up!



## Refreshments Are Served

**Lots of things are refreshing: a cool drink on a hot day, a breath of fresh air, and now factor data for fixed income orders!**

Stale data be gone — managing your fixed income orders just got even easier! Both the order Blotter and the post trade operations blotter now have the new Factor Refresh option to update the Factor Date and Factor values for your fixed income orders! When run, it updates both fields to the latest values in the order symbol's Factor Schedule in the Security Master, relative to the order's Settle Date.

There's more to it though: when run from the order Blotter, Factor Refresh also automatically recalculates the order and execution-level accrued interest values for the order, as well as its net/gross money and impact values as needed. When run from the post trade operations Blotter, it automatically recalculates the order's accrued interest and net/gross money values as needed.

So if you're working with fixed income, go on and treat yourself to something refreshing!



## Templates for Success

**You say it, we'll serve it.**

We did even more to make managing fixed income in Eze Eclipse better: we made the security creation process easier! Create and import fixed income securities from Market Data in bulk using our new excel template. But wait, "what if I have securities that aren't in Market Data, can I add them in bulk too?" Good news, you certainly can! We have another Excel template specifically designed for defining user created securities for bulk import. Download the template, fill out the fields and import.

We aren't done with Fixed Income, Import Securities, and Excel templates though! We've added fixed income assets to the Security Classification Template Excel file, so you can add classification data just like you've been able to do for other asset types in Eclipse. Go on, grab the templates, load the data, and let Eclipse load the data for you.



## Press the Reset

### It's like the multiverse (but for resets)!

Reset multiple swap positions all at once with the new batch reset feature! Want a little more specificity in your resets but still want to work in batches? We have an upload for that! Just upload a batch of resets in the file form when you're looking for more control over the price and FX values used in your resets!

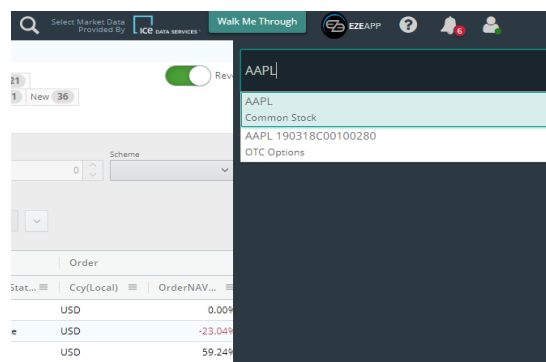


## Just a Click Away!

### Introducing Eclipse Global Search!

You can now search and view a summary of relevant information about securities from anywhere in Eclipse by using the new Eclipse Global Search feature. Currently, the search results are displayed from System, Accounting, and Trading modules. Additionally, you can configure Eclipse Global Search to narrow down the search results.

Find this feature by clicking the search icon at the top of the Eclipse screen!



## More Than a Symbolic Gesture

**We've release a lot of features centered around Fixed Income, and we promise this one isn't just for show.**

Naming a new security just got a lot easier. You can now create new, distinct securities in Security Master by entering a unique name into the Symbol parameter when defining a new Fixed Income security in the Security Master screen. Once created, these Symbols can be seamlessly used in other modules of Eclipse. What are you waiting for? Go ahead, and try it out!



# Quickly to the Next Quarter

**Just like that, winter turns to spring (or summer turns to fall) and Q1 is over and done. Here at SS&C Eze great features are always in-season, so you can expect our teams to keep rolling out new and exciting enhancements no matter the weather.**

To learn more about the whole system, go to the Eclipse Help (F1). You can also take tours of newly released features and functionality right in Eclipse. Just click on the Walk Me Through menu icon and select a topic to explore.



Eze Eclipse Q1 2023  
**Locked On.**