

SS&C | EZE  
Eze Investment Suite

2022.7

Update Tour



## No luck, just skill.

You didn't end up where you are by chance — you make careful decisions and weigh the risks before acting. That's why you don't rely on luck for your execution and order management, you turn to the skillfully built tools of Eze EMS and Eze OMS!

What has been expertly crafted in to this release? Organize and act in Eze EMS with the ability to **Group Rows by Column**, so you always have a good view on the action. Don't let haste get in the way of diligence with **Scheduled Pre-Trade Compliance** allowing you to get compliant trades out to market as soon as possible, without missing a compliance related beat.

## It's no gamble, let's go!

# Make the Choice.

The right data, the right decisions.

Information, organization, and action: three pillars to you work every day. That's why when we're working on new features for Eze EMS, we're focusing on getting you the data you need in ways that makes it easier to evaluate and act. Whether it's new P&L benchmarks, information grouping, or enhancements to our growing crypto trading features, you know that with Eze EMS 2022.7 you'll have everything you need to take action.



## More Go For Crypto

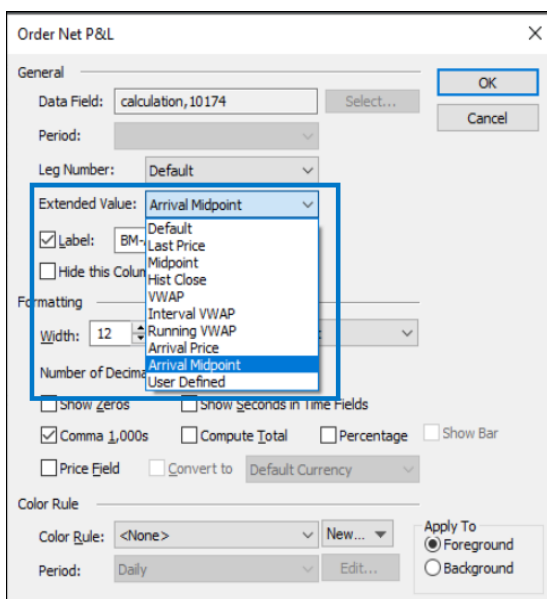
**Whether your Eze EMS is integrated with Eze OMS or not, your crypto trading experience is better than ever in Eze EMS 2022.7!**

If you're already trading crypto with your integrated Eze EMS/OMS systems, you're probably already familiar with the pre-trade compliance updates we added in the previous release, 2022.6. We're excited to say we've added pre-trade compliance support for orders executed in Eze EMS without a staged order and orders routed via the Eze EMS Crypto Trading RFQ windows!

Don't have an integrated system? That's okay, you (along with the integrated system users) can now configure Hot Buttons for crypto trades — getting in trades for cryptocurrencies in Eze EMS has never been easier or faster!



## Playing off the Bench(mark)



**It's all wins with new Profit and Loss Benchmarks in Eze EMS.**

We've offered the ability to view P&L benchmark fields for some time now, and now we have two new values for your P&L Calculations!

Need an order's current midpoint price? We have Midpoint waiting just for you — actually it's not waiting, it's continuously updating with the current midpoint price so have the most up-to-date information for your order.

Need to know what the midpoint price was when you placed the order? Then you need Arrival Midpoint, which will tell you the price when the order was entered, so you know where you began.





# Organize and Act

**A Market Minder can be a busy old place, but with a little click, order is just around the corner.**

When everything is happening, it's too easy to take absolutely nothing in because there is so much information to absorb. That's why we've introduced the ability to group rows by a given column.

Let's say you have orders spread across multiple markets, and you want to easily move between your orders on the Hong Kong Stock Exchange, London Stock Exchange, Nasdaq, and NYSE — it's as easy as right clicking the column header for exchange and selecting Group Rows by Column Values. Now your data is grouped together by exchange, and all you need to do is quickly look between the groups to get a clear picture on what's happening.

Symbol	Side	Amount	%Vol(20ADV)	LMT	last v arrv	PM Instructions	Arrv Prc	VWAP	Cross Status Disp
<b>HKS (2)</b>									
1.HKS	SellShort	1,000	100%	HO	0.00%		H48.30	48.32	Excluded
1.HKS	SellShort	1,000	100%	HO	0.00%		H48.30	48.32	Excluded
<b>LSE (4)</b>									
MKS.LSE	SellShort	1,000	<1%	0	-1.06%		113.05	112.99	Excluded
MKS.LSE	SellShort	1,000	<1%	0	-1.02%		113.00	112.99	Excluded
VOD.LSE	Buy	1,000	<1%	0	0.72%		107.84	108.59	Excluded
VOD.LSE	Buy	1,000	<1%	0	0.65%		107.76	108.59	Excluded
<b>NAS (7)</b>									
META	Buy	1,000	<1%	\$0	1.21%		\$148.02	146.67	Excluded
META	Buy	1,000	<1%	\$0	1.21%		\$148.02	146.67	Excluded
NFLX	Buy	1,000,000	35%	\$241.89	0.93%		\$243.63	0.00	Excluded
SSNC	Buy	1,000	<1%	\$0	-23.07%		\$52.72	0.00	Excluded
SSNC	Buy	1,000	<1%	\$0	-23.07%		\$52.72	0.00	Excluded
TSLA	SellShort	1,000	<1%	\$0	-0.46%		\$309.07	0.00	Excluded
TSLA	SellShort	1,000	<1%	\$0	-0.46%		\$309.07	0.00	Excluded
<b>NYSE (1)</b>									
CAT	Buy	1,000	<1%	\$0	-25.19%		\$182.11	0.00	Excluded
CAT	Buy	1,000	<1%	\$0	-25.19%		\$182.11	0.00	Excluded
TWTR	Buy	1,000	<1%	\$0	0.00%		\$41.66	0.00	Excluded
TWTR	Buy	1,000	<1%	\$0	0.00%		\$41.66	0.00	Excluded

When you're all set, just right-click again and select Remove Row Grouping, and you're ready for the next challenge!

## It's Your Call

**We can't make the choices for you — we just make the tools so you can make the best ones, and while you're out there making things happen, we're looking at the next great thing to offer you.**

SS&C Eze releases regular updates for Eze EMS, so you can always expect new features and enhancements that give you the extra edge.

Contact us to find out more about what's included in Eze EMS 2022.7.

Eze EMS 2022.7

# Make the Choice.

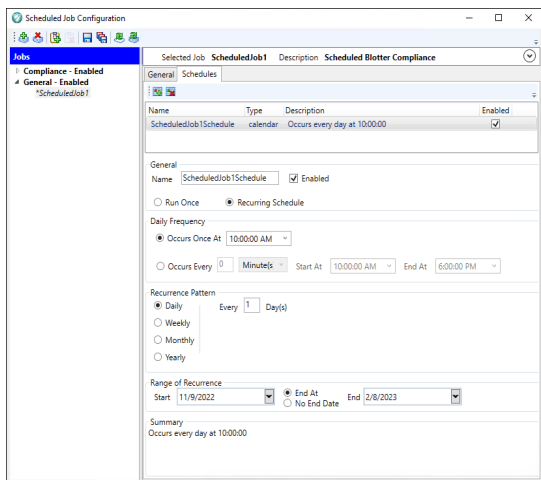
# A Hidden Gem.

Uncover the your new possibilities.

Sometimes the changes are clear as day, while others reside in the background making your life better without the fanfare. When you first encounter Eze OMS 2022.7 you might be think it's all pre-trade compliance, but you'd be missing out on all the work done with Eze Operations Portal, the Eze Interface API, Eze EMS/OMS trade synchronization and more! Don't be fooled, there's more to this release than meets the eye. Let's start our search now!



## Pre-Trade Compliance on Your Schedule



### Rest easy with scheduled Trade Blotter compliance checks.

Scheduled post-trade Compliance checks have been part of Eze OMS for a long time, but starting in 2022.7, you can schedule pre-trade compliance checks on the Trade Blotter. By configuring these automatic checks, you can rest easy knowing that violation-free trades are being sent to market as quickly as possible.

Scheduled Trade Blotter compliance evaluates trades in aggregate, so the logic of how trades are adjusted varies a bit from traditional Compliance runs. For more information about this logic, as well as how to set up Trade Blotter compliance schedules, see the Eze OMS 2022.7 release notes!



## No Stone Unturned

### Enhancements for every part of Eze OMS

There's something for everyone in Eze OMS 2022.7, as we've added new features throughout the software. There's now more flexibility for manual Eze OMS to Eze EMS trade synchronization, more configurability with receiving DTCC Central Trade Manager® (CTM) data in Eze Operations Portal, the ability to perform Analytics calculations on open repo trades, improvements for applying individual directed brokers to trades, improved overdraft notifications, and improvements for RESTful APIs.

We're thrilled with our offerings this release, so take a look at the Eze OMS 2022.7 release notes for more!

## Only the Best

**New features and enhancements are only good if they're useful: that's why we make sure that when we have something to offer, it's just what you were looking for.**

SS&C Eze releases regular updates for Eze OMS so we can continue to offer you new features and enhancements without the long wait.

Contact us for the complete release notes for 2022.7!



Eze OMS 2022.7  
**A Hidden Gem.**