



SS&C | EZE
Eze Investment Suite

2022.4

Update Tour



The 4-1-1.

Psst! Did you hear? 2022.4 has been released and it's already turning heads. Luckily for you, we have the highlights when it comes to the latest and greatest from Eze EMS, Eze OMS, and Eze PMA.

What exactly has everyone so excited? **Crypto trading** in Eze EMS sees game changing enhancements. Eze OMS is opening up a whole new world with **Eze Marketplace**. Last but certainly not least, Eze PMA is increasing your flexibility with the new **Variable NAV** option in the Income and Expense Suite.

**Get the hard facts.
Read on to learn more!**

Fly High.

Soaring towards success.

When it comes to your trades, we know you feel the need for speed. To help you perform at top-notch levels, we're making sure you have unbeatable support every time you climb into the cockpit. In 2022.4, you'll find a big surprise: the option to upgrade to 64-bit Eze EMS! With additional enhancements to Crypto Trading and Buying Power Alert Rules, we're making sure you're locked, loaded, and ready to go. Strap in tight — we're ready to launch!



Level Up

Take Crypto trading to new heights.

Thought Eze EMS hit its ceiling for trading Crypto? Not even close! Get ready to climb higher with the new Crypto trading features we've packed into 2022.4.

Let's start with a bang: you can now stage Crypto orders with fractional quantities in Eze EMS via the List Creation Manager. This provides you with flexibility when managing large Crypto orders by allowing you to execute child orders at the trading venues of your choice. You can either enter the order information manually, or import the orders using a pre-configured CSV file.

We then went ahead and increased your control of Crypto trades by adding the ability to modify and/or cancel staged or live Crypto orders directly from Eze EMS. Finally, the MarketMaker enters the Crypto game with the ability to route Limit and Market staged Crypto orders to trading venues for execution.

But we didn't stop the MarketMaker fun there. You can now adjust Crypto order quantity and price, split the Crypto order into child orders, and enter a notional amount for Crypto orders all from a MarketMaker window.



Bit by Bit

Introducing 64-bit Eze EMS.

We've been keeping a secret for a while now, but we can't hold it in any longer! Our teams have been rigorously working behind the scenes to bring you a major upgrade, and now we can finally show it off. Welcome, 64-bit Eze EMS!

By upgrading to 64-bit Eze EMS, you'll be taking advantage of more efficient resource usage and an enhanced user experience, all while enjoying the same features and workflows you know and love. Just a heads up: 64-bit is currently being offered for early adoption purposes, so you'll need to reach out to your SS&C Eze client service representative for download information.

In the meantime, you can still find the 2022.4 upgrade for 32-bit Eze EMS on your regular download site, providing all the other exciting features and enhancements we've talked about here and more!



On Full Alert

Keep the power in your hands.

We know how important it is to keep your buying power in check. That's why we've enhanced Buying Power Alert Rules in AMP with the ability to create a **Secondary Alert**. When you have a Secondary Alert configured, you'll receive the first alert when the Primary threshold is met, and then a second alert when the Secondary threshold is met. This allows you to reduce the number of alerts sent, and increase your focus on the areas that matter most.

Imagine you have \$100,000 buying power. You set a Primary Alert to be triggered when you hit 30% buying power, and a Secondary Alert to be triggered when you hit 10%. As a result, you will receive one alert once you hit \$30,000 (30%) buying power, and a second alert when you hit \$10,000 (10%). Pretty handy, right?

Check out the 2022.4 release notes for more information and instructions on how to create a Secondary Alert.

Clear Skies

With another release in the books, we're powering up our engines and soaring into the second half of the year. We have plenty of gas left in the tank, and we're only picking up speed from here. You can trust we'll be back with a fresh round of innovative features and enhancements in our next release. Hold on to your hats. We'll be flying back around soon.

SS&C Eze releases regular updates for Eze EMS, so you can always expect new features and enhancements that give you the extra edge.

Contact us to find out more about what's included in Eze EMS 2022.4.

Eze EMS 2022.4

Fly High.

A New World.

Explore the possibilities.

We're always looking for ways to increase the power of investment management in Eze OMS, and with 2022.4, we've added a whole new world of possibilities. With loads of new features and enhancements, there's one addition that steals the show: the new Eze Marketplace workroom widget. Read on to learn more about this exciting new offering, and some of the other game changing features waiting for you when you upgrade to Eze OMS 2022.4.



Introducing Eze Marketplace

Stretching your investment management capabilities.

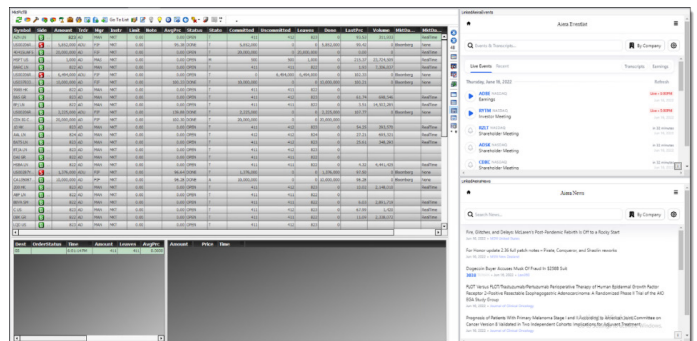
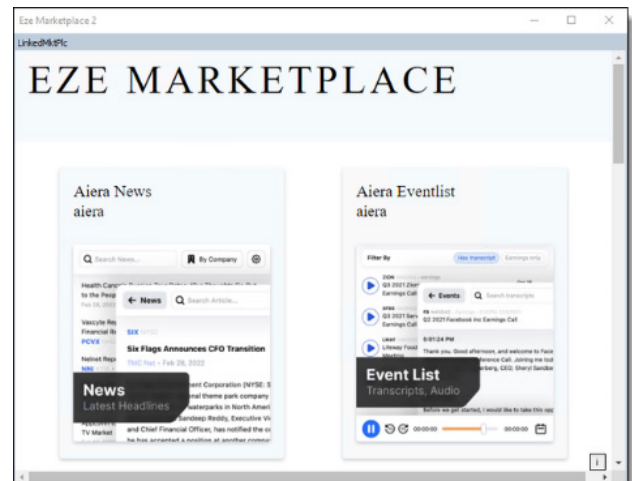
In this release, we are thrilled to be adding Eze Marketplace to Eze OMS via the new **Eze Marketplace** workroom widget. With this widget, you can easily find and integrate plug-and-play solutions directly from SS&C and other trusted partners, without ever leaving Eze OMS.

Discover just how easy it can be to unlock additional capabilities for risk, market intelligence, data visualization, workflow controls, analytics, and more.

But we didn't stop there: to further expand what Eze Marketplace can do for you, we've also added the ability to link the widget to the Eze OMS Trade Blotter and Analytics grids. This allows you to send OMS data to partner applications, and then view the corresponding partner application data within Eze OMS – all with the simple click of a button.

For example, the Trade Blotter workroom shown right is linked to both Aiera News and Aiera Eventlist. Whenever you select a row on the Trade Blotter, the corresponding news articles and company event data appears in the Eze Marketplace widget.

Get ready to bring a whole new world of possibilities to Eze OMS. Make sure to check out the 2022.4 release notes to discover everything Eze Marketplace can do for you.





Dream Team

Strengthening the Dynamic Duo.

In this release, Eze EMS/OMS Integration gets a little extra love with increased clarity and new and improved functionality. What exactly did we add? Whenever an Eze OMS-originated trade is claimed in Eze EMS, the OMS trade Status updates to Open, allowing you to clearly see that the trade has been claimed by an Eze EMS user.

In addition, we've increased the power of your futures trades with the new ability to enter and execute futures contracts with negative prices in Eze EMS, and then have those trades accepted by Eze OMS when sent for compliance checks.

Around the Corner

What we've shared here only brushes the surface. We're thrilled to offer you even more new functionality in 2022.4 that's eagerly waiting to maximize your trading potential. However, we're even more excited to keep Eze OMS growing with cutting edge features and enhancements in the releases to come. You won't have to wait long. Our teams are already hard at work imagining new worlds and finding ways to take you there. Stay tuned! The next chapter in this adventure is right around the corner.

SS&C Eze releases regular updates for Eze OMS so we can continue to offer you new features and enhancements without the long wait.

Contact us for the complete release notes for 2022.4!

Eze OMS 2022.4

A New World.

Dream Big.

Increase your impact.

We're big believers that no idea is too small, and no dream is too big. That's why we'll never stop exploring ways to increase your power and expand what you can do with Eze PMA. With 2022.4, we're breaking boundaries and providing you with a range of new functionality that aims to elevate the efficiency and impact of your day. With enhancements to the Income and Expense Suite and Eze OMS/PMA Integration, new system and procedure settings, and more, we're helping you make sure your big dreams come true. Got stars in your eyes? Let's learn more.



Value in Variables

Adding flexibility to the Income and Expense Suite.

We know how important it is to stay flexible during the workday and go with the flow as information comes in. To keep your data fluid, we've added the ability to use a **Variable NAV** date when calculating management or admin fee accruals in the Income and Expense Suite. This addition provides you with the flexibility to calculate these fees based on a reference date (e.g., Today, One Day Ago, Two Days Ago, One Month Ago, etc.), rather than a fixed date.

Giving you a hand with this functionality are the new **NAV/GAV Type** and **NAV/GAV Reference Date** columns, available in the Management Fee Setup, Management Fee Wizard, Expense Prepayments and Accruals, and Admin Fee Wizard grids. We also updated the Expense Accruals Generate Procedure setting to include the variable NAV options, and added the **NAV/GAV Value** and **NAV/GAV Date** columns to the Expense Prepayments and Accruals (Generated Trades pane) grid.

There's a whole lot more where that came from. Check the 2022.4 release notes for full details on all of these exciting additions.



Easy-Breezy

Simplifying Eze OMS/PMA Integration.

Are you an Eze OMS/PMA user? This one is just for you. We're speeding up your integrated workflows by providing a quick and easy way to update open Repurchase Agreement details.

Now, whenever you run the Trade Import procedure and bring open Repurchase Agreement trades into Eze PMA, any forward date and repo rate updates made in Eze OMS are automatically updated in Eze PMA. This allows details of open Repo positions that have been closed in Eze OMS to be reflected in Eze PMA. The successful imports can then be viewed on the Trade Blotter. Job done!



Abundance of Opportunity

Setting you up for success.

In 2022.4, we're putting even more power in your hands with a range of new system and procedure settings. For example, the new **Continue if No Action** step setting in Scheduled Procedures allows you to determine if the procedure continues to execute, even if there is no action taken in the current step. There's also the new **Expiry/Maturity Date** setting, which increases your control over batch processing expired or maturing securities by giving you the ability to decide which securities are batch-expired.

Next, the **Use Average of Ask and Bid for Option Pricing** setting is added to the Data Feeds System Settings page, and when set to Yes, Eze PMA calculates the Mid-price for your downloaded Options securities when using Eze Market Data. Finally, the **Enable Security % Return** setting allows you to decide whether results are calculated for the Security Return % column, providing you with increased control over data and improving loading times for the Performance Contribution grid.

Never Stop Dreaming

We do what we do for people like you. With every release, you inspire us to test our limits and push our work further, so that we're always offering you more. Behind the scenes, our teams are taking that inspiration and using it to create new features and enhancements that we can't wait to show off soon. Don't go anywhere! We'll be right back.

SS&C Eze releases regular updates for Eze PMA, so each release offers enhancements and new features to offer you more.

Contact us for the complete release notes for 2022.4!

Eze PMA 2022.4

Dream Big.