



Eze Eclipse

2019 Q1

New Feature Highlights





## Eclipse might be in the cloud, but its benefits are always clear.

Eze Eclipse is flexible, scalable, reliable, and constantly improving!

Eclipse improves a little bit every day, with new features rolling out when they are ready for you. We're sure you're already aware of many of these changes, but just in case you missed any, we've got you covered. Here's a summary of some of most exciting features we've introduced in the first quarter of 2019.

## Let's dive into what's waiting for you in Eclipse.

Eze Eclipse Q1 2019

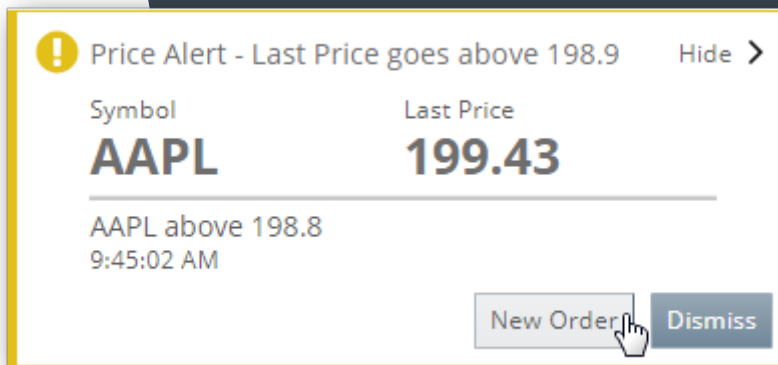
# Eye-opening.

Seeing is believing.

## Stay On Top With Price Alerts

You can be first out of the gate, thanks to price alerts.

Let us watch the prices for you. In the Watchlist widget of Eze Eclipse, you can now create popup alerts that appear when a symbol exceeds, approaches, or drops below a certain last price. You'll see the alerts no matter where you are in the system when the price changes.



The alert messages also contain a link right to the New Order ticket, so you can get started on creating a new order immediately.

## Locates Improvements Found!

Your search for easier locates management is over.

We've introduced the Locates tab in Trading, which allows you to view and manage all of your locates requests in one place.

Your system can also be configured to integrate with Eze Locate Hub, which is a central service that handles the processing of locates requests between your firm and your prime brokers. When this integration is configured, you can also use the Locates tab to send requests to and receive messages from your counterparties.

# Clarity For You

See your positions more clearly than ever through improvements for Eclipse Analytics and Reporting.

Updates to Eclipse Analytics and Reporting were all the rage in the first months of the year—now you can understand your positions better so you'll always be ready to take action. Here are just a couple of new features you can find right now in Eclipse!

## Set the stage for success with more ways to set up analytics widgets!

Analytics widgets are even easier to use than before: You can now pin columns in the Analytics Grid widget. This allows you scroll horizontally while still keeping important information in your sights. In the Best/Worst widget, you can customize the aggregation used to display your data, and it's now possible to chart any column in the Bar Chart Widget!

We've also added more columns that you can use to understand your positions. You can now include quarter-to-date (QTD) profit and loss (PL) columns and symbol-based historical PL columns (in addition to the previously available portfolio-based PL columns), and add more greeks to the Analytics Grid widget.

Take a look at the Analytics Fields topic of the Eclipse help for more info.

Analytics widgets aren't the only things we've improved — now it's easier than ever to get the data you want, when you need it, via new reports.

Eze Eclipse now includes more reports, to get you started on reviewing and managing your data in no time. The new reports include **Post Trade Compliance Alerts**, **Pre Trade Compliance Alerts**, and **Sec13F**.

The pre- and post-trade alerts reports show you exactly what you'd expect based on the report title, but it's worth saying a little more about the Sec13F report. The Sec13F report helps simplify the process of filing your Form 13F report with the Securities and Exchanges Commission—we track the official list of section 13F securities and generate most of the Form 13F information table for you (just tell us if you want to exclude small positions or not).

Just run the report, fill in values for columns 6, 7 and 8, and you should be ready to file!

# Soft Dollars: Not So Hard Anymore

Do you use soft dollars as part of commissions management?

You're in luck! We've updated our budget management functionality in the Commissions component to include the ability to create soft dollar budgets.

You can now make and manage Third-Party Budgets, which can be used to track your soft dollar commissions.

## Fit For Your Schedule

Archive/rollover processes now work around the clock for you.

Waiting for you in Eclipse is the ability to set up your system to automatically rollover and archive orders on a schedule you configure. And exactly how you want that to happen is really up to you. Do something simple, like make it so your system rolls over the blotter at the end of your trading day, every day.

Not for you? Okay.

You can do something complex then! Want to configure your system with several different archive/rollover processes, each running at the end of the trading day for different regions and affect only orders for that region? No problem. The choice is yours to do what fits your schedule.

## More To Come!

We've got one quarter down and three to go

The Eze Eclipse team will be rolling out many more new and exciting features this year, so keep an eye out for new functionality.

To learn more about the whole system, go to the Eclipse Help (F1). You can also take tours of newly released features and functionality right in Eclipse. Just click on the **Walk Me Through** menu icon and select a topic to explore.

Eze Eclipse Q1 2019

# Eye-opening.